

2855 Self-Propelled Sweeper



Standard Features

John Deere Tier 4 Final 4045TFC03 4.5L, 74 HP engine (no DEF required)

Hydrostatic drive system with two-speed piston motors and double-reduction gear boxes

Hydraulic steering

Two-stage heavy-duty air cleaner

Low-profile cab (54") with ergonomic seat and fully illuminated dash panel switches

Pressurized, dust-free cabin with full heating & air conditioning

Rear-view camera

Large windows for improved visibility

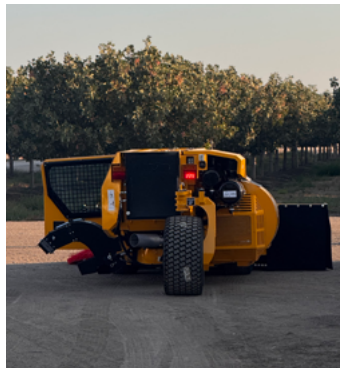
Full gauge display with tachometer, engine temperature, oil pressure, and electronic fuel level

LED light package

Powder coat finish

CleanFix Reversing Fan

Larger rear steering fork with heavy duty rear tire



Dimensions

Overall Height: 54"

Fuel Capacity: 39 gal

Tire Size: Drive: 29 x 12.5 x 15
Steering: 26 x 12 x 12

Top Speed: 13 mph

Auger Heads: 6'6", 7', 8', 10' & 11'

Tine Bar Heads:

4-Bar: 6'6", 7'6", 8'6"

5-Bar: 6'6", 7'6", 8'6", 9'6"



OPTIONS

- » Traction Valve
- » 3WD
- » Power V