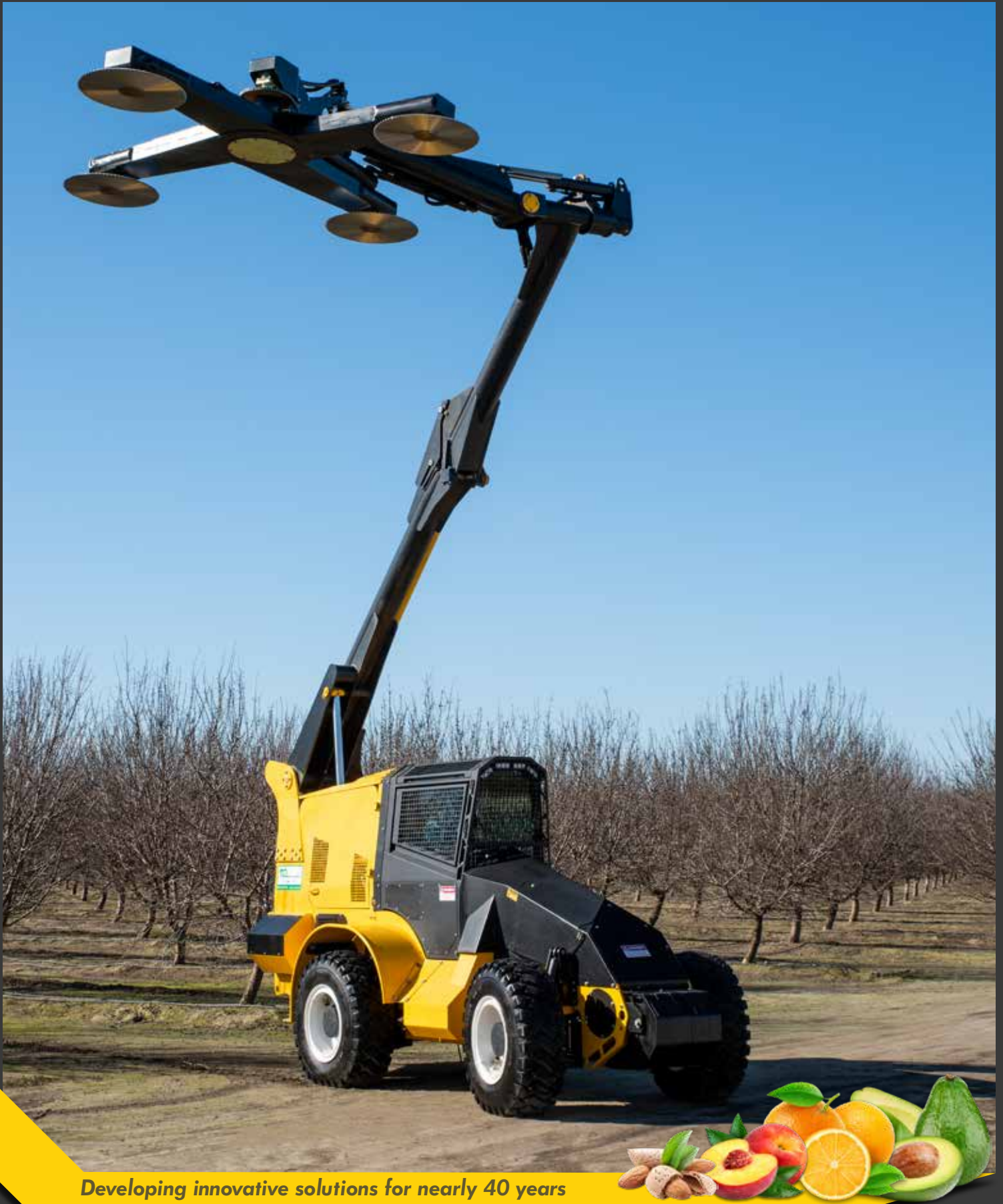


TH1400-H T4

Topper / Hedger



Developing innovative solutions for nearly 40 years

TH1400-H T4

Topper / Hedger

www.tol-inc.com

The TH1400-H is one of our most versatile, commercial duty, topper hedgers. The center tower design allows the machine to fit in even the tightest planted orchards.

The 32" diameter saw blades provide efficient operation when cutting large diameter wood. The "High Reach" boom allows the machine to perform commercial pruning of nut trees which typically require flat topping heights above 20 feet.



Specifications:

- Cutting Pass: 13ft
- Max Hedging Height: 43ft
- Max Flat Topping Height: 25ft
- Transport Height: 12ft
- Cutting Capacity: 6in
- Engine: 200hp John Deere Final Tier 4 Diesel Engine
- Optional 4-Wheel Steering
- Optional Side-Tilting Chassis

* All dimensions are approximated.

The machines pictured in this brochure are intended to illustrate the general appearance and features of these products. They are equipped as specified by a particular customer and may or may not show items that are optional or recommended. Specifications, illustrations, and descriptive materials herein were accurate as known at the time this publication was approved for printing. We reserve the right to discontinue models or options at any time or to change specifications and materials, equipment and design without notice and without incurring obligation.

